

PROGRAMS NEWS

RADIO PROGRAMS

WEAN-THE SHEPARD STORES-345
 8:00 a. m.—Merrill's Church, Columbia.
 9:00 a. m.—Hearing musical, Barnum, Columbia.
 10:00 a. m.—Children's story hour, Columbia.
 11:00 a. m.—Service from the Methodist Episcopal church, Columbia.
 11:30 p. m.—Pope John XXIII, Columbia.
 12:05 p. m.—Musical program, Columbia.
 2:00 p. m.—The Dandies—orchestral program.
 3:00 p. m.—The Dandies—orchestral program.
 4:00 p. m.—The Dandies—orchestral program.
 5:00 p. m.—The Dandies—orchestral program.
 6:00 p. m.—The Dandies—orchestral program.
 7:00 p. m.—The Dandies—orchestral program.
 8:00 p. m.—The Dandies—orchestral program.
 9:00 p. m.—The Dandies—orchestral program.
 10:00 p. m.—The Dandies—orchestral program.
 11:00 p. m.—The Dandies—orchestral program.
 12:00 p. m.—The Dandies—orchestral program.

Today's Programs in Brief

For the convenience of radio fans the following is a list of programs broadcasting today in brief form. Figures following station denote wave length. The hour is based on daylight saving time.

LOCAL STATIONS
 8:00—Musical program, WEAN, 345.
 8:30—Musical program, WEAN, 345.
 9:00—Musical program, WEAN, 345.
 9:30—Musical program, WEAN, 345.
 10:00—Musical program, WEAN, 345.
 10:30—Musical program, WEAN, 345.
 11:00—Musical program, WEAN, 345.
 11:30—Musical program, WEAN, 345.
 12:00—Musical program, WEAN, 345.
 1:30—Musical program, WEAN, 345.
 2:00—Musical program, WEAN, 345.
 2:30—Musical program, WEAN, 345.
 3:00—Musical program, WEAN, 345.
 3:30—Musical program, WEAN, 345.
 4:00—Musical program, WEAN, 345.
 4:30—Musical program, WEAN, 345.
 5:00—Musical program, WEAN, 345.
 5:30—Musical program, WEAN, 345.
 6:00—Musical program, WEAN, 345.
 6:30—Musical program, WEAN, 345.
 7:00—Musical program, WEAN, 345.
 7:30—Musical program, WEAN, 345.
 8:00—Musical program, WEAN, 345.
 8:30—Musical program, WEAN, 345.
 9:00—Musical program, WEAN, 345.
 9:30—Musical program, WEAN, 345.
 10:00—Musical program, WEAN, 345.
 10:30—Musical program, WEAN, 345.
 11:00—Musical program, WEAN, 345.
 11:30—Musical program, WEAN, 345.
 12:00—Musical program, WEAN, 345.

REINARTZ, LAMB TO SPEAK HERE

Inventors to Address Radio Club of R. I. Meeting

John I. Reinartz of South Manchester, Conn., inventor of the "Radio Television" program, and James J. Lamb of Hartford, technical editor of the R. I. Engineer, will address the Radio Club of Rhode Island at its annual meeting and banquet of the Radio Club of Rhode Island, which will be held Saturday, June 1, at the Hotel Wrentham, Providence.

Hook-Ups Comment

REINARTZ, LAMB TO SPEAK HERE

Inventors to Address Radio Club of R. I. Meeting

John I. Reinartz of South Manchester, Conn., inventor of the "Radio Television" program, and James J. Lamb of Hartford, technical editor of the R. I. Engineer, will address the Radio Club of Rhode Island at its annual meeting and banquet of the Radio Club of Rhode Island, which will be held Saturday, June 1, at the Hotel Wrentham, Providence.

SAIC

SAIC

There were those who expressed surprise that the gold medal awarded for good work done by the radio by the American Academy of Arts and Letters in New York recently did not go to Graham McNamee.

An inside story is that for a time the committee, composed of June 1 last month has listened in on practically every announcement of consequence in the radio world, practically decided upon John B. D'Arcy.



James J. Lamb

The Dials Diary

By the Trouble Shooter

It's well known that a great many radioists are not tuning for far-out attractions and are more content to accept local program, chain or independent, or those emanating from relatively near-by stations.

MAY IN RADIO

Edison Applied for Patent on Wireless

Significant radio developments have occurred during the month of May, as the following bits of history will indicate.

May, 1885—Edison took out a patent on long-distance telephony without wires. The application was made by him at the time he was working on induction telephony, but the patent (No. 788,000) was not granted until Dec. 29, 1891. It was later purchased from Edison by the Marconi Wireless Telegraph Company.

May, 1915—On May 12 in Battery Park, New York city, the Mayor unveiled a monument in memory of wireless communication who had lost their lives at the cost of duty.

May, 1916—The determination of the difference in longitude between Paris and Washington with the aid of radio which had been in progress since October, 1913, was completed during this month. The result, expressed in terms of time, was 5 hours, 17 minutes, 35.7 seconds, and had a probable accuracy of the order of 0.02 seconds.

May, 1923—During this month, the construction of a large radio station in the Bavaria Alps, was undertaken. The aerial was suspended by wire cables stretched between the tops of the two hills; the aerial wires being suspended from these cables.

May, 1926—Radiotelephone was used for the first time in directing the film-making of a naval scene of the coast of California for a photoplay.

Speakers, A Working of Science

Electro-dynamic speakers, even when mounted in flat baffles, have comparatively strong resonances at certain low frequencies. The baffles should be heavy enough so as not to vibrate readily. Some of the cabinet type electro-dynamic speakers have cabinets with thin plywood sides which vibrate strongly and give these speakers an unpleasant tonal quality. In order that an electro-dynamic speaker may operate properly, it must be mounted in a heavy, non-resonant enclosure. The sterner the field, the more sensitive the speaker. In order to obtain high sensitivity, it is essential that the general approval of those closely in touch with the radio situation.

RADIO PROGRAMS

Continued from Page Fourteen. 11:54 a. m.—Just harmony, that's all. 11:55 a. m.—Fifth Avenue of the air.

3:30 p. m.—Riverside string quartet. 3:30 p. m.—Same as WJAR. 3:30 p. m.—Fighting voices.

10:45 a. m.—Organ recital. 12:30 p. m.—Theatre presentation. 1:00 p. m.—Theatre presentation.

With Providence Radio Hams

"Elements of Alternating Current" will be the subject of a talk by William T. Wyman at the next meeting of the Providence Radio Association Thursday night.

LUCKY AMATEUR

Chicago "Ham" Will Study Radio Conditions in Borneo. Chicago—(AP)—When Harry W. Wells was in knee pants a few years ago, he got a boyish thrill from tales about the wild men of Borneo.

Vagrant Waves of Interest to Fans

Radio in France is known as T. S. P. This stands for Telegraphie Sous Fil, which means telegraphy without wire.

Excursions to New York

EVERY FRIDAY to June 28, Inc. FRI. LEAVE N.Y. SAT. IN N.Y. SUN. IN N.Y. MON. ARRIVE N.Y. BUSINESS

RADIO JIM

Have You That Full Rich Tone? Is Your Set Selective? Have You Some "Special Problem"? CALL RADIO JIM

Radio Questions and Answers

Radio Editor, Sunday Journal: I have received a circular describing a set that is claimed to give marvellous power and volume because it has a push-pull amplifier.

LOW WAVES STRONGER

Fans Report Increased Volume From Foreign Stations. Danville, Va.—(AP)—Constant listeners on the short wave bands have observed a marked strengthening of signals from Chelmsford, England, which relays London program on 25 meters.

SLIP COVERS and UPHOLSTERY

PROTECT YOUR FURNITURE FROM THE SUN, DUST AND DIRTY. 3 pc. Nette in Flowered Cretonne. Many patterns to choose from, including our material cut out for you. \$15.98

PACKARD

THE SAFEST PLACE TO BUY A USED CAR. MANY a motorist who can afford a new car at a certain price prefers instead to invest the same amount of money in a good used car of a higher price class.

PACKARD SINGLE SIXES

Table listing Packard Single Sixes models and prices: 1-16 Model Touring \$250, 1-26 Model Coupe \$450, 1-33 Model Sedan Limo. \$350, etc.

PACKARD STRAIGHT EIGHTS

Table listing Packard Straight Eights models and prices: 6-26 Model 5-Pass. Sedan \$2150, 2-43 Model Sedan, Custom Body \$1650, etc.

MARSHALL AND COMPANY. Complete Radio Service. Sets—Supplies—Parts. RADIO JIM DEXTER 7274

OUR AUTO NUMBER FRAMES WILL BEAUTIFY YOUR CAR. 2834 \$5 Pair. No Charge for Pickup.

SWAN. THE WALTER W. MASSIE Radio Sales and Service Bureau. 16 Winslow Rd., Edgewood. Telephone Broad 0507.

WJAR. 10:45 a. m.—Organ recital. 12:30 p. m.—Theatre presentation. 1:00 p. m.—Theatre presentation.

WJAR. 3:30 p. m.—Riverside string quartet. 3:30 p. m.—Same as WJAR. 3:30 p. m.—Fighting voices.

WJAR. 10:45 a. m.—Organ recital. 12:30 p. m.—Theatre presentation. 1:00 p. m.—Theatre presentation.

WJAR. 10:45 a. m.—Organ recital. 12:30 p. m.—Theatre presentation. 1:00 p. m.—Theatre presentation.

WJAR. 3:30 p. m.—Riverside string quartet. 3:30 p. m.—Same as WJAR. 3:30 p. m.—Fighting voices.

WJAR. 10:45 a. m.—Organ recital. 12:30 p. m.—Theatre presentation. 1:00 p. m.—Theatre presentation.

WJAR. 10:45 a. m.—Organ recital. 12:30 p. m.—Theatre presentation. 1:00 p. m.—Theatre presentation.

WJAR. 3:30 p. m.—Riverside string quartet. 3:30 p. m.—Same as WJAR. 3:30 p. m.—Fighting voices.

WJAR. 10:45 a. m.—Organ recital. 12:30 p. m.—Theatre presentation. 1:00 p. m.—Theatre presentation.

WJAR. 10:45 a. m.—Organ recital. 12:30 p. m.—Theatre presentation. 1:00 p. m.—Theatre presentation.

WJAR. 3:30 p. m.—Riverside string quartet. 3:30 p. m.—Same as WJAR. 3:30 p. m.—Fighting voices.

WJAR. 10:45 a. m.—Organ recital. 12:30 p. m.—Theatre presentation. 1:00 p. m.—Theatre presentation.

WJAR. 10:45 a. m.—Organ recital. 12:30 p. m.—Theatre presentation. 1:00 p. m.—Theatre presentation.

WJAR. 3:30 p. m.—Riverside string quartet. 3:30 p. m.—Same as WJAR. 3:30 p. m.—Fighting voices.

WJAR. 10:45 a. m.—Organ recital. 12:30 p. m.—Theatre presentation. 1:00 p. m.—Theatre presentation.

WJAR. 10:45 a. m.—Organ recital. 12:30 p. m.—Theatre presentation. 1:00 p. m.—Theatre presentation.

WJAR. 3:30 p. m.—Riverside string quartet. 3:30 p. m.—Same as WJAR. 3:30 p. m.—Fighting voices.

WJAR. 10:45 a. m.—Organ recital. 12:30 p. m.—Theatre presentation. 1:00 p. m.—Theatre presentation.

WJAR. 10:45 a. m.—Organ recital. 12:30 p. m.—Theatre presentation. 1:00 p. m.—Theatre presentation.

WJAR. 3:30 p. m.—Riverside string quartet. 3:30 p. m.—Same as WJAR. 3:30 p. m.—Fighting voices.

WJAR. 10:45 a. m.—Organ recital. 12:30 p. m.—Theatre presentation. 1:00 p. m.—Theatre presentation.

DX HEAVEN FOUND ON TOP OF WORLD

Alaska Town Hears Foreign as Well as U. S. Stations

Shanankk boasts total lack of interference, excellent atmospheric conditions.—Programs in strange tongues workaday occurrences.

Judging from a letter written by Mrs. Fred E. Moore of the Alaska Native School to P. C. Crews of 210 Seventeenth street, S. E., Washington, D. C., Sitka, Alaska, on top of the world where the school is located, must be a heaven for DX fans.

"It seems strange to everyone that we are able to hear so many stations and so widely separated, but our location has much to do with that, also the lack of interference. It is like placing us at the peak of a triangle, and then radio, like so many strings or ribbons stretching out in all directions with none so vastly farther away than others." Mrs. Moore writes. "Germany is very little farther from us than Southern California for they come to us across the pole. Programs put on in Germany on Tuesday night reach us Monday morning, due to the international date line. Auckland, New Zealand, is our most distant station which comes to us regularly in the summer months."

"You see, they have their winter when we have summer, so their broadcasting is stronger at that time. We hear them occasionally now, but not so well as in the summer. Lima, Peru, is also a long distance station, but the one which gave us the greatest thrill was IRO of Rome, Italy. On Friday morning after Thanksgiving, 1927, we ate breakfast to some wonderful grand opera music from that station.

Japanese Jabbering

"One German station taught English last year and for nearly an hour one morning we heard Robinson Crusoe—four words at a time—given in English, then in German. One station in Japan is teaching English this year. A short time ago we heard the monotonous of the year spoken very slowly, in English, and then, oh, such jabbering in Japanese. It will surely be the means of making all nations speak the English language.

"You spoke of your crystal set—we too, had a crystal set in 1921-22 when in Bremerton, Wash., and we were pleased then to be able to hear Seattle

as we are now to hear President Coolidge give his Thanksgiving Proclamation over radio (we heard that this year). When we came North in 1922, our friends told us that it would not be possible to find a set which would pick up the nearest broadcasting station (Seattle being over 2000 miles away). We existed the first two years, how I cannot tell—but when we went out for a month in 1924, we decided to get a set and at least try our luck. Mr. Moore had been an electrician and storage batteryman in the navy yard before we entered the Alaska School Service, so he knew quite a little about what he wanted and with the help of two or three other good 'roots in the navy yard, he assembled and balanced all the parts of a five-tube neodymium.

"When we first set the neodymium up, we thought it was Saturday and when we turned the set on, there were the first words to come through our horn like a thunder storm. 'And now may the Lord be with you.' It was the closing service of the First Presbyterian Church in San Francisco. We have never had to guess at the day of the week since, for radio keeps us straight even to the hour, for that comes now by telephone clocks direct from Astoria. From that October until the last of the following June, RGO was on the air only three times that we failed to hear it, and oh, so many other stations from near and far. In fact the five-tube nest, was so good we could not separate some of the stations when the reception was at its best.

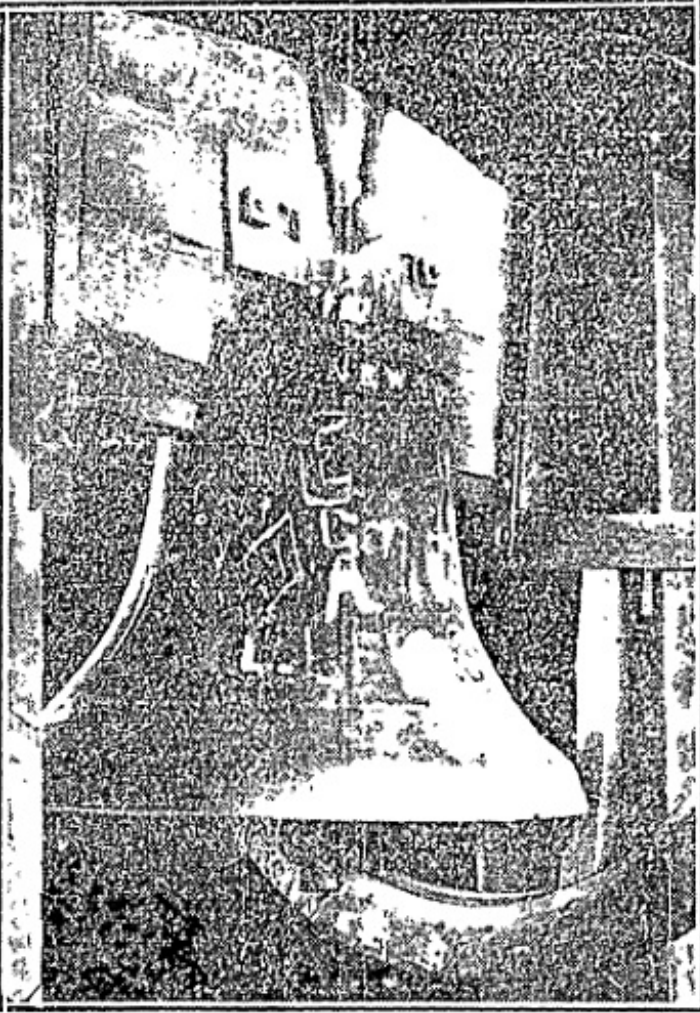
"We then sent for a more selective set, an eight-tube ultradyne. It was more selective, but for volume or distance it could not beat the neodymium. We kept both sets and that settled lots of arguments as to whether we would tune in a prize fight or grand opera.

"Antennae and batteries mean a lot in good and bad reception and we have had scores of letters asking about those two things. We use storage batteries for both A and B. We have for outside antenna one single 350 feet No. 12 copper wire running north and south. We also have a copper tubing inside antenna of about 30 feet next our ceiling. Some nights we use both of them; sometimes just the outside, and sometimes the inside tube."

Voltage Fluctuations

Receiving sets that operate from the 110-volt alternating current lines are in some localities subject to a rather wide current fluctuation, ranging from 90 to 140 volts. This surging of the current shortens the life of the tubes and plays havoc with tonal quality. When the voltage drops into the nineties the sound intensity decreases just as if the volume control was turned down, then within a minute, or even a few seconds, the volume may run up as high as 140 volts and greatly increase the volume.

East Greenwich Academy Retires Old School Bell



A Faithful Old Servant Yields to Progress

East Greenwich Academy has recently retired an old and faithful servant. For nearly 100 years the great iron bell in the tower building has served both student and townspeople. But its day is past. The old bell yields to progress and hangs silent before the quick efficiency

of the electric bell system recently installed. The bell was cast in New York city in 1840 by E. Force, and until 1910 it sounded the fire alarm for the town in addition to regulating school activities. Citizens rose and retired by it, and if the bell-ringer overslept, so did the town. The students have always rung the

bell, receiving a liberal allowance from their tuition for the service and on occasions when the rope has severed, some accommodating young Vulcan would hammer the bell by hand until the last student had "made class."

One vantage about the cryptic lettering carved on the beams and inscribed on the bell itself. Those boys and girls who, in a spirit of daring and adventure, climbed a hundred feet or so up the long, dark stairway—up the rickety ladder—and carved their initials there! What has become of them all—what were their destinies?

But the antiquity of the old bell is not without honor. It will still hang in the south tower overlooking the campus and when the school team rides to victory its mellow clamor will still announce the good news.

Man-Made Static

Good reception cannot be had from a receiving set until interference or man-made static is checked. Virtually all of the static is caused by local electrical machinery, such as motors, vacuum cleaners, washing machines, refrigerators, oil burners, hair driers, sign flashers and all other electrical apparatus. Every power and light company is eagerly seeking cooperation: it wants to sell electric current, and interfering machinery hinders them constant complaint. Real estate operators cannot have satisfied tenants when the radio reception is spoiled by noises from oil burners, irons, refrigerators and elevators.

Good Contact Needed

Because A C tubes operate at comparatively low voltages and high current, it is necessary that the spring terminals of sockets make very good contact with the tube prongs. The 327 type operates at 15 volts and 105 amperes, while the 327 type operates at 2.5 volts and 175 amperes, and if good contact is not made the resistance between the tube prong and the socket terminal may be sufficient to reduce current supply to the 327 to a value that is too low for satisfactory operation.

RADIO AND MOVING DAY SUGGESTIONS

Fan Should Make Sure Set Will Work at New Location

If Receiver is an Electric, Owner Will Be Wise if He Investigates Type of House Current Supply. Otherwise, Apparatus May Be Ruined

When you move—think about your radio set. Will it work all right in your new location? How are you going to transport it? How about the tubes? And will you need a new aerial?

The most important matter, unless your set secures ALL its power from batteries, is to be sure the set will function with the current that is available at your new address. Homes in this country are usually supplied with electric current in one of the following forms, in order of prevalence:

1. 110 volts, alternating current, 60 cycles.
 2. 110 volts, direct current.
 3. 110 volts, alternating current, 25 cycles.
 4. 32 volts, direct current, farm lighting plant.
- If your set is being operated from one of the above sources of power, you must have exactly the same type of power at the new location, or the set will not work. Worse, you are likely to ruin the set if you connect it to the wrong type of current supply.
- City Settlers
- In the densely populated sections of cities, direct current at 110 volts is frequently employed. Direct current requires special set connections. You will sometimes find large groups of apartment buildings with their own power plants, furnishing direct current. The electric meter in the basement of the house or apartment is usually marked in such a way that you can tell whether it is for direct or alternating current.
- In country locations, the 110-volt alternating current is supplied as a rule in 60 cycle frequency. Most A. C. radio sets are built for this kind of current. In some places, and especially in many sections of Canada, 25-cycle current is supplied and specially-built sets are needed. Sets built for one frequency will not work on the other, and may be damaged by connecting them to the wrong type, so find out—first—before connecting a radio set to the house lighting socket in a new location.
- The farm lighting plants, at 32 volts D. C., are seldom used except to furnish storage battery power, so that these present no special problem.

On Mousing the Set

While a radio set is usually constructed quite ruggedly nowadays, still, it is a delicate mechanism. If possible, move the set in your car, where it can ride comfortably on the rear cushions. Remove all the tubes, no matter how the set is carried, and wrap them carefully in the original cartons or in soft cloth, to avoid the slightest jarring. The elements are rather easily loosened, and the result will be a noisy howling set.

Many receivers will find it more of a nuisance to take down their aerials than to leave them, and the next tenant will usually take advantage of an aerial, if there is one. A new aerial wire, insulators, lead-in, lightning arrester, etc., cost but little, and will be a good investment anyway in improved results.

EFFECTIVE JOLTS

Broadcasting of Great Events Available Public to Radio

Important events, broadcast via the radio, play an impressive part in the further popularization of the art. A receiver in every home, the special impetus through the special series of well-qualified observers.

For instance, it is pointed out, radio wins converts by the droves when such an event as a presidential inauguration is programmed. Such a schedule, occupying only a few hours, will do more to make people who don't own sets buy them, and those who do have them buy new ones or have the old ones rejuvenated, than weeks and even months of consecutive excellence in programs.

Of course, the exciting and good news "regular" programs win out in the long run, probably, by an inexorable process of slow but steady and unintermittent accretion. The big event gets its work in a sensational manner, not altogether in a disinterested, non-commercial, and business and industry.

Every line of endeavor these days preads its periods when it spotlight shines upon it with warming fervor, and its special events—bringing, say, 100 million throughout the country into a gigantic hook-up for an occasion of national and international interest—provides radio with just that.

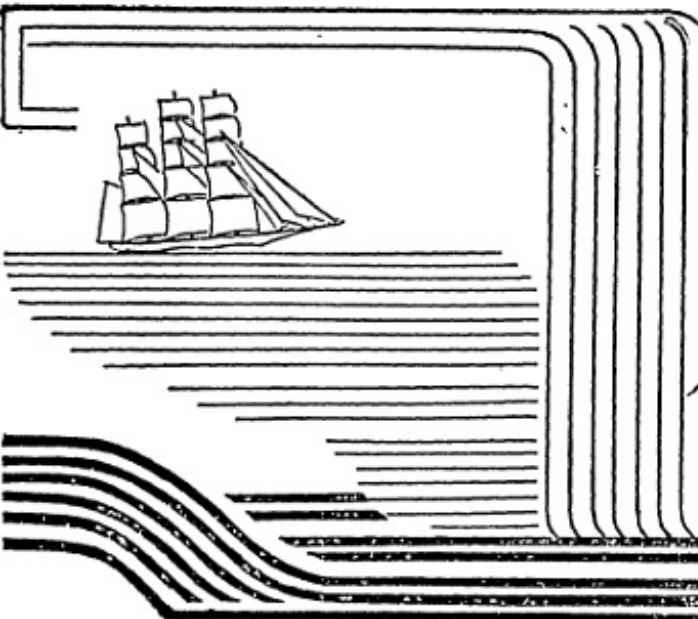
It is, as they say, radio does offer these pleasant jolts every so often, for it has become so stabilized, so accepted, that its millions of adherents lapse into a state-of-mind attitude. For its new stupendous achievement in radio brings a fresh realization of the vital and long-making part the whole development is playing in our national and individual life.

The Average Homeing Set

The average set now in use has from six to seven tubes, either battery or pen-ray operated. Its average daily use is four hours, or approximately 1450 hours a year.

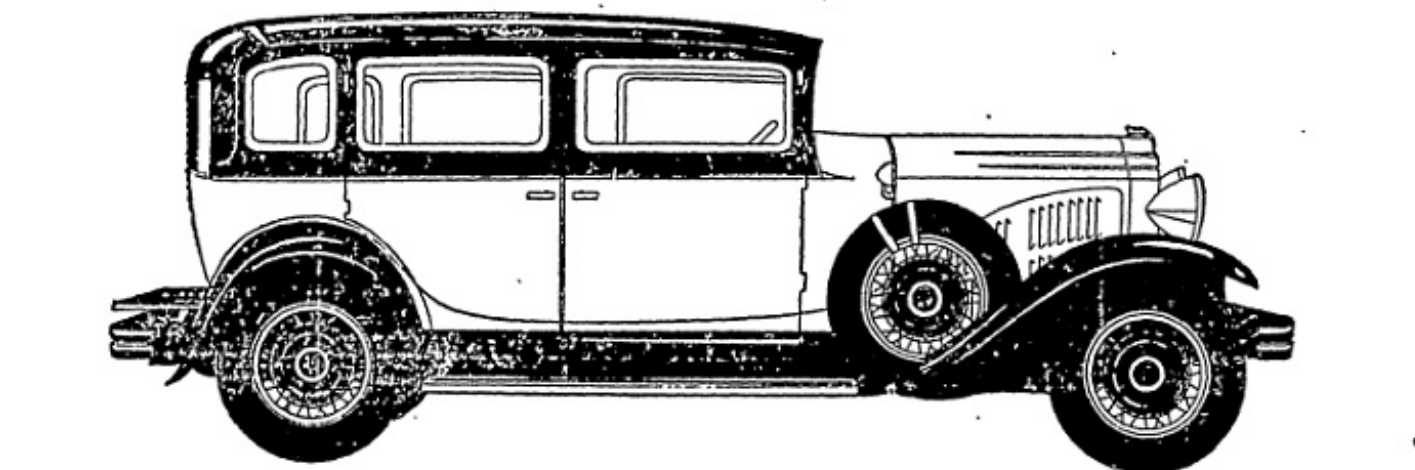
THE VERY MAN you need to help you in your business may be offering his services through a classified ad today. Look under "Situations Wanted"

AFTER ALL—WHY SHOULD YOU BE IN THE \$1000 CLASS



Almost any \$1,000 car will give you \$1,000 value— BUT (and here's the point) how much will it be costing for repairs and upkeep within a year or two?

A hundred dollars, or so, more on the down-payment—maybe three additional payments—and you can have a Reo Flying Cloud. And a Reo will not only keep you free from serious repair bills well into the third year (saving quickly the added investment) but it will give you exceptional service for four, six, or even more, years. For here is a car that for long life, performance and mechanical dependability is rated with cars listed in the highest price-brackets . . . and one that will give you a pleasure and satisfaction which



Illustrated is the 5-Passenger sport sedan model of the Reo Flying Cloud on the 115-inch chassis.

only the man who drives one can put a dollar and cents value upon.

Get the facts on Reo—performance facts—pocket-book facts—before you buy any car this spring.

Now you can have a Reo Flying Cloud at a lower price than ever before.

REO MOTOR CAR CO. • LANSING, MICH.

Reo Flying Clouds are priced at the factory as follows:

- 5-Passenger Sedans \$1395, Sport \$1495, Master \$1745, Sport \$1870; Car of the Month \$1970.
- 2-Passenger Coupe \$1375, Sport \$1475, 2-4-Passenger Coupe \$1395, Sport \$1495; Master \$1625, Sport \$1750.
- 5-Passenger Brougham, Master \$1595, Sport \$1720.
- 4-Passenger Victoria, Master \$1695, Sport \$1820.
- Roadster, Master \$1685, Sport \$1810.

REO FLYING CLOUDS

PROVIDENCE 343 Broad St., at Trinity Sq. Dexter 4670

PAWTUCKET 103-9 Exchange Street Tel. Pawt. 4900

Rhode Island Distributors

—ASSOCIATE DEALERS—

REO MOTOR SALES, INC. 1076 No. Main St. Providence, R. I.

MATT H. BENNETT 1076 No. Main St. Providence, R. I.

—ASSOCIATE DEALERS—

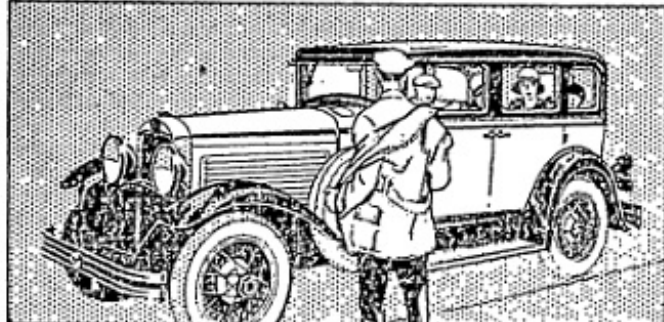
MARCHINGTON-CORRY CO. CULLERTON'S GARAGE

The Roosevelt

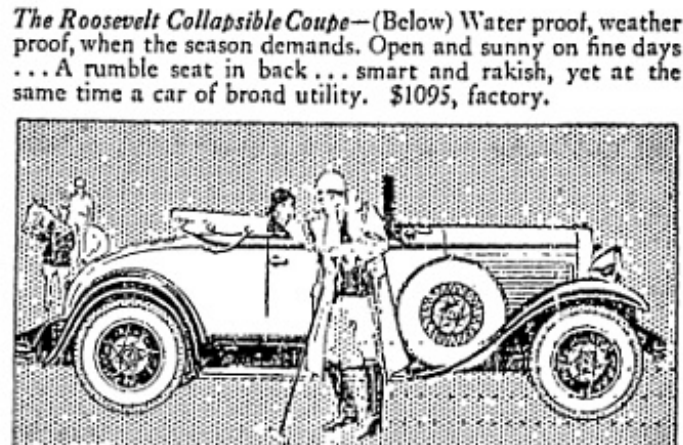
A NEW CAR FOR ALL MARMON-BUILT

Smart... yet Thrifty transportation

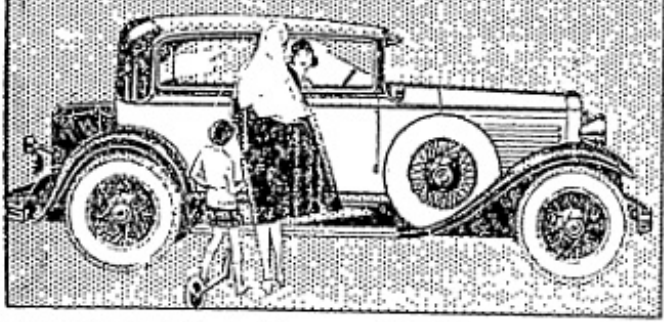
The World's First Straight-Eight Under \$1000



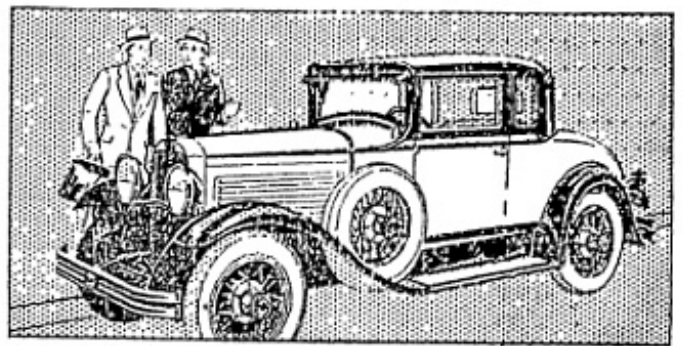
The Roosevelt Sedan—A full-sized five-passenger car for a man and his entire family to enjoy. Powered by a genuine Marmon Straight-Eight motor of 70 H.P. . . . performs the requirements of daily service faithfully and economically. \$995, factory.



The Roosevelt Collapsible Coupe—(Below) Water proof, weather proof, when the season demands. Open and sunny on fine days . . . A rumble seat in back . . . smart and rakish, yet at the same time a car of broad utility. \$1095, factory.



The Roosevelt Victoria—The very kind of a car that is often identified as "her" car . . . Designed for the comfort of four passengers. Interior is an entirely new interpretation of the decorator's art. Plenty of room for luggage. \$1065, factory.



The Roosevelt Standard Coupe—(Below) Men like this car . . . Doctors, for instance, buy it for its easy, smooth operation . . . Salesmen, for the same reasons, and because it's extremely thrifty. Equipped with rumble seat. \$995, factory.

The Roosevelt is a car for all . . . Dependable, alert in performance and easy on the purse. Also, Marmon 68, \$1465 and Marmon 78, \$1965. Prices at factory. Group equipment extra.

RHODE ISLAND MOTOR COMPANY DISTRIBUTORS

543 ELMWOOD AVENUE TELEPHONE BROAD 9127

EFFICIENT, DEPENDABLE SERVICE NOW AVAILABLE TO MARMON OWNERS

ASSOCIATE DEALERS

THIBERT MOTORS 37 Montgomery Street Pawtucket, R. I.

EAST PROV. MARMON CO. 378 Tannan Avenue East Providence, R. I.

CARIGNAN MOTOR SALES COMPANY 27 Hamlet Avenue Woonsocket, R. I.

BLIVEN MOTOR SALES COMPANY Westerv. R. I.

R. E. WHEATON MOTOR SALES COMPANY